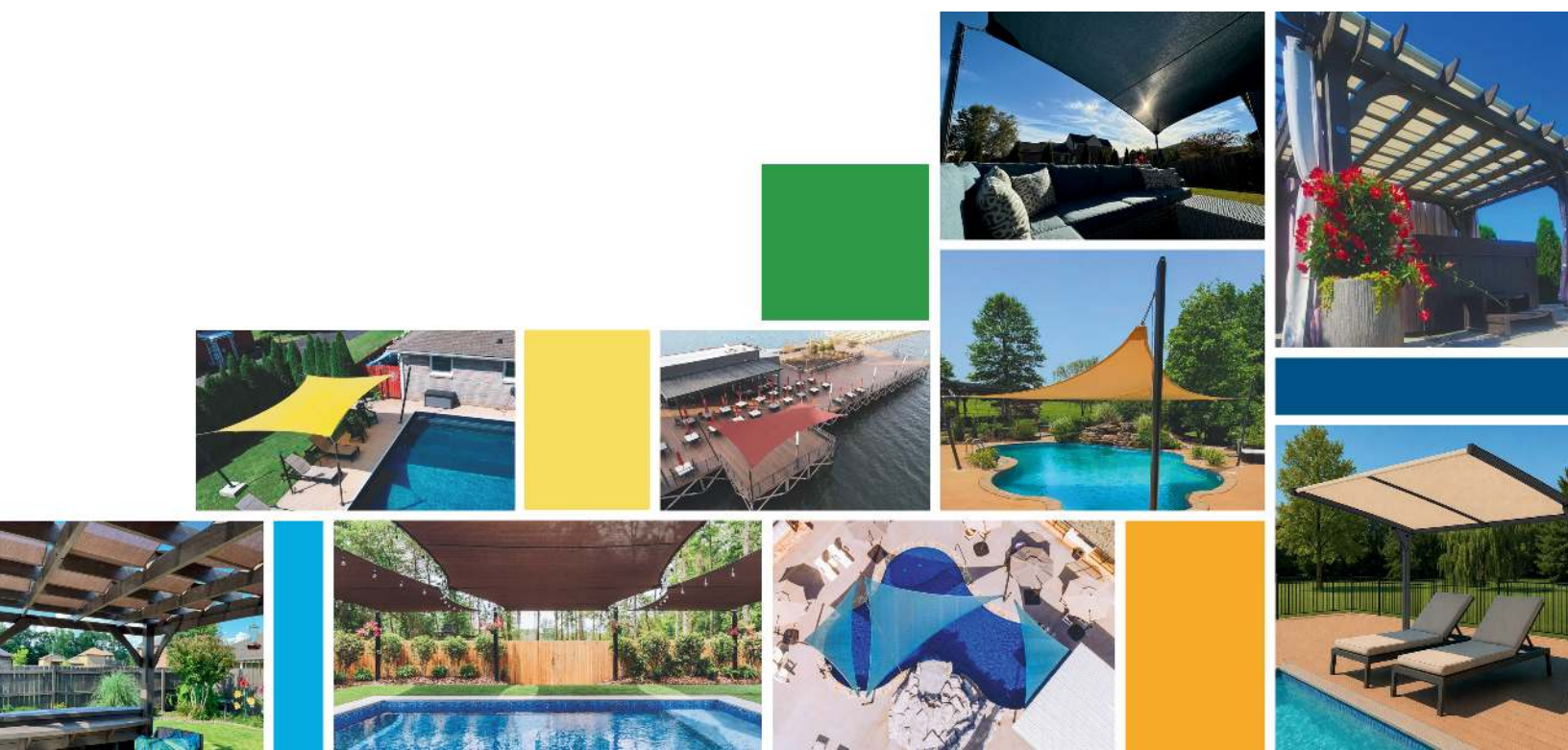


SHADES by TARA[®]



2026 Shade Solutions Guide
www.tarapools.com

We Make Shades Designed for YOU!

Perfect Fit. Premium Quality. Designer Style.



CUSTOM SHADES

Custom shades let you design around your space. With versatile options and durable construction, they elevate the look and feel of any outdoor space.



PERGOLA SHADES

Transform your pergola into a shaded retreat. Designed to fit your space, it installs seamlessly while adding elegance and UV protection without blocking airflow.



SHADE KITS

Designed for quick setup, Shade Kits deliver custom-sized shade with kit simplicity. Select your style and size, add poles based on your space, and install with ease.

HOW IT WORKS: Design your Perfect Shade in Four Easy Steps:

- 1 Measure Your Space** — Grab a tape measure and size up the area you want to shade – this helps you choose the perfect fit.
 - 2 Pick Your Shade Color** — Go subtle or make a statement. Choose a fabric that fits your outdoor vibe.
 - 3 Add Poles** (optional) — Choose the pole option that fits your shade size and setup needs.
 - Standard** (steel) — Fixed height adjustment with **6 fixing points**. Supports shades up to **282 sq. ft.**^{*1}
 - Pro** (aluminum) — **Full slider adjustment** for precise positioning. Supports shades up to **360 sq. ft.**^{*2}
 - 4 Choose Your Pole Color**^{*3} — Finish the look with sleek pole colors that tie everything together.
- ✔ **That's it!** Your shade arrives ready to install.



6 Fixing Points



Full Slider Adjustment



**Pole Colors:
Bronze | Silver | Anthracite**

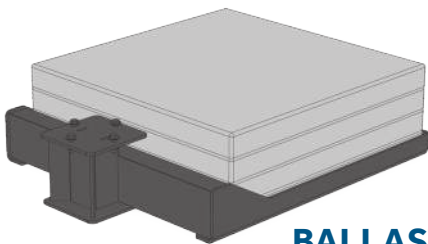
*Kit includes 75° poles, 90° poles are available in select applications.



SHADE DELUX™ CANTILEVER

With a streamlined 8'×10' canopy and durable aluminum frame, the Shade DeLux Cantilever provides generous shade without taking up valuable deck space. Its modern design and reliable performance make it a standout feature in any outdoor environment.

Add Ons (Additional Cost)



BALLAST BASE
(Each base must hold 200 lbs.)



Easy Installation

with quick release bungee canopy and multiple mounting options



Versatile

generous shade area, wide color and accessory options



Strong & Sturdy

weather-resistant high grade aluminum for rust-free, maximum durability



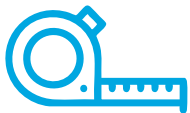
EXTENSION KIT

SHADES^{by}TARA[®] PREMIUM SUN SHADES

Cooler spaces. Stylish designs. Effortless comfort.

Transform any backyard with high-quality shade that protects, cools, and elevates your outdoor living.

THE SHADE ESCAPES DIFFERENCE:



Tailored Fit:

Made to your exact dimensions for a perfect fit in any setting.



Long-Lasting Performance:

Backed by a strong industry warranty for dependable shade season after season.



Durable & Breathable Fabric:

Blocks up to 98% of UV rays while allowing airflow.



Color Options:

Choose from 17 vibrant colors to help you match your outdoor style.

Shade Colors Additional Colors Available Upon Request

STYLISH COLORS FOR ANY SPACE

Choose from a curated collection of modern neutrals and bold, eye-catching tones to match your outdoor aesthetic.



Silver



Pearl Onyx



Latte



Hazelnut



Bottle Green



True Blue



Navy



Vanilla



Wheat



Mocha



Graphite Gray



Laguna Blue



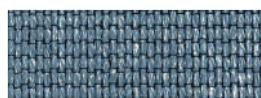
Sunflower



Pistachio



Olive



Dove Blue



Paprika

Colors shown in this brochure are representational only. See your local pool dealer for fabric samples.